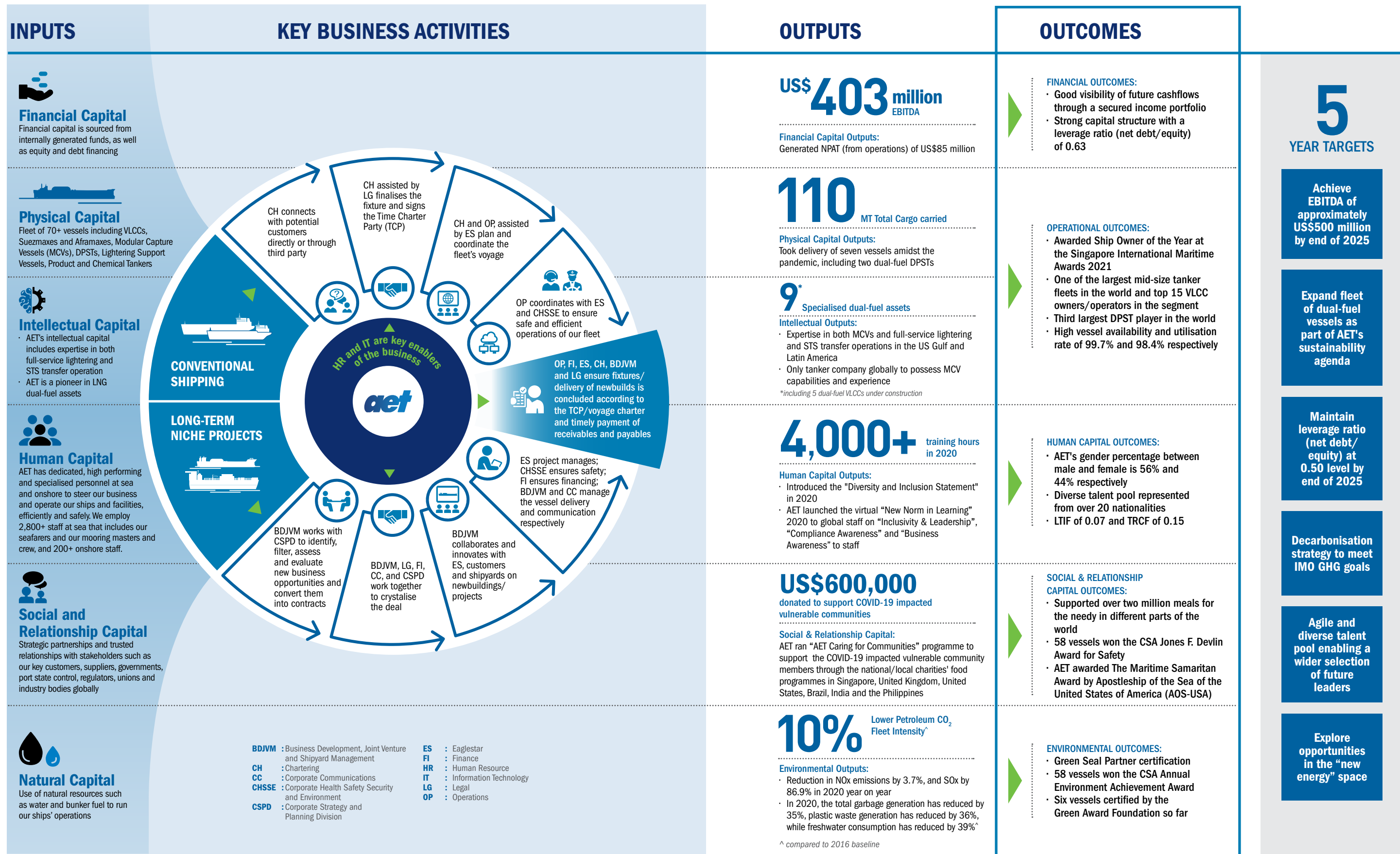


# OUR BUSINESS MODEL

Our system of inputs, business activities, outputs and outcomes that aims to create value over the short, medium and long term



## 5 YEAR TARGETS

- Achieve EBITDA of approximately US\$500 million by end of 2025
- Expand fleet of dual-fuel vessels as part of AET's sustainability agenda
- Maintain leverage ratio (net debt/equity) at 0.50 level by end of 2025
- Decarbonisation strategy to meet IMO GHG goals
- Agile and diverse talent pool enabling a wider selection of future leaders
- Explore opportunities in the "new energy" space